

# SC 30T

Scanjet tank cleaning equipment



## KEY FEATURES

### SC 30T

- Magnetic Transmission
- Fully programmable
- Minimized cleaning time
- Separated turning and lifting movements
- Strainer standard
- WashTrac™ (option)
- Drive unit can be removed without exposing tank to atmosphere
- No gearbox inside tank
- AISI 316 and PTFE
- Prewash program
- Grease lubricated drive unit

Scanjet Model SC 30T is driven by the cleaning media by means of a fixed installed turbine with an integrated programmable drive unit. The permanent lubrication means an oil-free drive unit and the patented magnetic transmission allow an exchange of the drive unit without exposing the tank to the outside atmosphere.

#### Powerful single nozzle tank cleaning machine

The single nozzle concept gives a very solid and powerful jet with an optimized cleaning result on all tank surfaces. It has the unique separated turning and lifting movements and a rapid manual overdrive for sector cleaning setting.

#### Self draining nozzle

The nozzle assembly is self draining and the machine has a full 0-180 degrees cleaning range. The patented design is in accordance with IMO-Marpol requirements.

#### Fully programmable

The SC 30T is fully programmable to meet multiple cleaning needs. Various cleaning programs, including prewash, can be chosen during or before the cleaning operation.

#### Integration with WashTrac™

Fully prepared for integration with WashTrac™ tank cleaning monitoring system.

#### Typical applications for SC 30T:

- Chemical carriers
- Product carriers
- Crude oil tankers
- Offshore applications

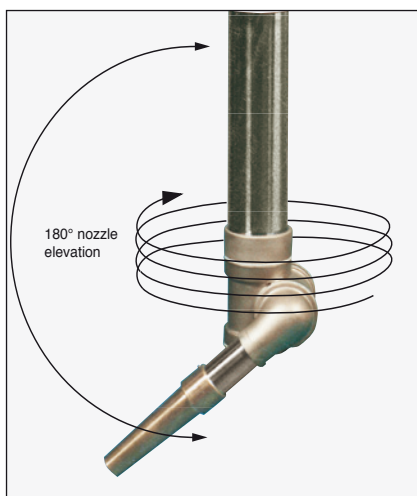
## SC 30T



# SC 30T

## Scanjet tank cleaning equipment

### Nozzle spiral motion



180° nozzle elevation for complete cleaning range coverage and the unique separated lifting and turning movements.

### Single nozzle – optimal impact



Crude oil washing certified.



Water washing.



Easy program selection including pre-wash.



The drive unit can be removed without oil spill or exposing tank to atmosphere.



Connection to WashTrac™ as option.

### GENERAL ADVANTAGES

- Maintenance free system below deck
- Fully programmable machines
- Cleaning with closed hatch conditions
- Minimized cleaning time
- Minimized cleaning media consumption
- Dry (oil-free) drive unit
- Filter in front of turbine
- Portable cleaning machines, long hoses etc. minimized
- Production, design and spares direct from factory
- Optimal tankcleaning economy
- Drive unit may be replaced or serviced without exposing tank to atmosphere
- Free design service
- Computerized shadow diagram calculation
- Passivation of stainless steel tanks allowed for

## SC 30T

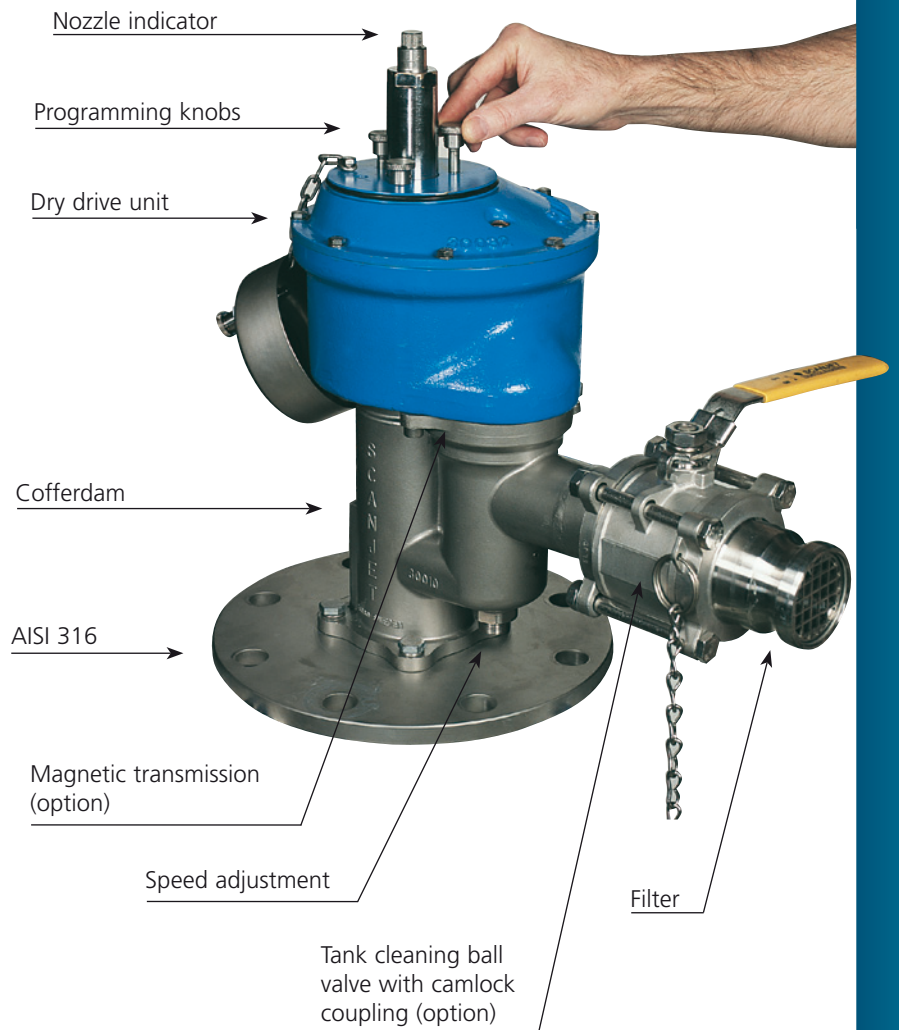
Developed for the third millenium the Scanjet Model SC 30T offers the latest technology in tank cleaning.

The machine is produced in AISI 316 meeting all standard specifications.

Any desired starting position of the nozzle will be reached in just a few seconds, and the design allows for a manual overdrive at any time during the tank cleaning operation.

The machine has very few moving parts requiring a minimum of service and is maintenance free below deck.

The drive unit can be removed without exposing the tank to atmosphere. Thanks to the magnetic transmission, there is no penetration between the drive unit and the turbine which means that any accidental leakage is eliminated.



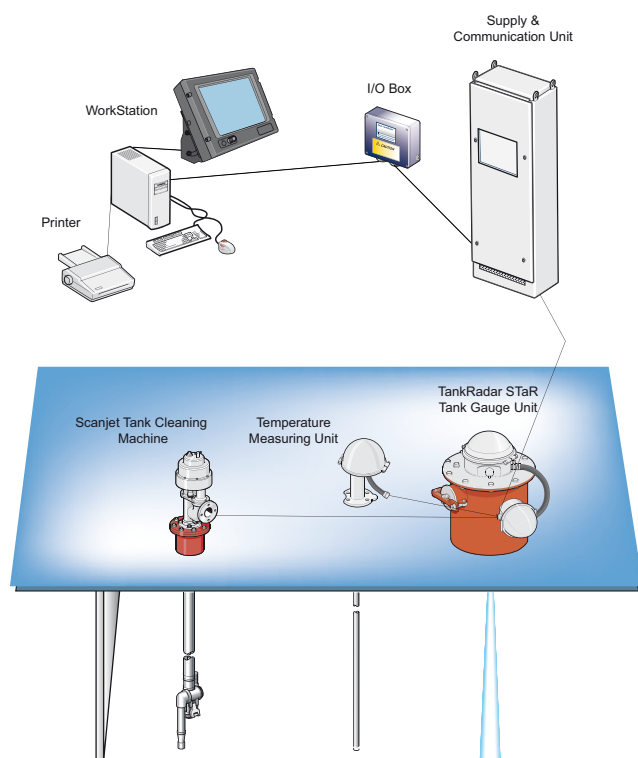
## WashTrac™ Tank Cleaning Monitoring System

The innovative tank cleaning monitoring system is jointly developed by Saab Rosemount Marine and Scanjet Marine. By using already installed hardware, WashTrac™ monitors the tank cleaning operation onboard any tanker.

**The WashTrac™ systems offers following features and advantages to operators.**

- Operating status of tank cleaning machines
- Start/Stop alarm of tank cleaning machines
- Operation and prewash data logging on printer

Various options available



(Tank cleaning monitoring system recommended by Intertanko)



# SC 90T2

Scanjet tank cleaning equipment



## KEY FEATURES

### SC 90T2

- Magnetic transmission
- Fully programmable
- Minimized cleaning time
- Separated turning and lifting movements
- Strainer standard
- WashTrac™ (option)
- Drive unit can be removed without exposing tank to atmosphere
- Grease lubricated drive unit

Scanjet Model SC 90T2 is driven by the cleaning media by means of a fixed installed turbine with an integrated programmable drive unit. The permanent lubrication means an oil-free drive unit and the patented magnetic transmission allow an exchange of the drive unit without exposing the tank to the outside atmosphere.

#### Powerful single nozzle tank cleaning machine

The single nozzle concept gives a very solid and powerful jet with an optimized cleaning result on all tank surfaces. It has the unique separated turning and lifting movements and a rapid manual overdrive for sector cleaning setting.

#### Self draining nozzle

The nozzle assembly is self draining and the machine has a full 0-180 degrees cleaning range.

The patented design is in accordance with IMO-Marpol requirements.

#### Fully programmable

The SC 90T2 is fully programmable to meet multiple cleaning needs. Various cleaning programs can be chosen during or before the cleaning operation.

#### Integration with WashTrac™

Fully prepared for integration with WashTrac™ tank cleaning monitoring system.

#### Typical applications for SC 90T2:

- Crude oil tankers
- Product carriers
- Bulk carriers

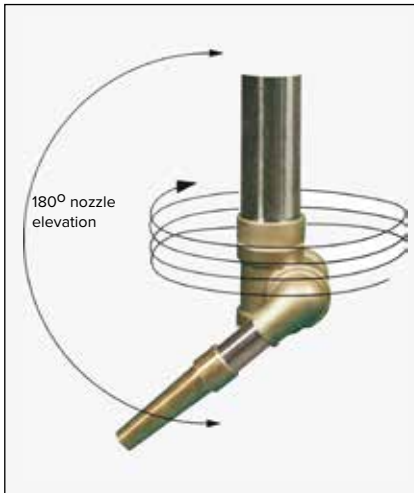
## SC 90T2



# SC 90T2

## Scanjet tank cleaning equipment

Nozzle spiral motion



180° nozzle elevation for complete cleaning range coverage the unique separated lifting and turning movements.

Single nozzle – optimal impact



Crude oil washing certified.



**Water washing.**



Easy program selection.



The drive unit can be removed without oil spill or exposing tank to atmosphere.



Fully prepared for connection to WashTrac™ (option).

### GENERAL ADVANTAGES

- Maintenance free system below deck
- Fully programmable machines
- Cleaning with closed hatch conditions
- Minimized cleaning time
- Minimized cleaning media consumption
- Dry (oil-free) drive unit
- Filter in front of turbine
- Production, design and spares direct from factory
- Optimal tankcleaning economy
- Drive unit may be replaced or serviced without exposing tank to atmosphere
- Free design service
- Computerized shadow diagram calculation
- AISI 316 material available as option

## SC 90T2

Developed for the third millenium the Scanjet Model SC 90T2 offers the latest technology in tank cleaning.

The machine is produced in materials according to shipyard requirements, meeting all standard specifications.

Any desired starting position of the nozzle will be reached in just a few seconds, and the design allows for a manual overdrive at any time during the tank cleaning operation.

The machine has very few moving parts requiring a minimum of service and is maintenance free below deck.

The drive unit can be removed without exposing the tank to atmosphere. Thanks to the magnetic transmission, there is no penetration between the drive unit and the turbine which means that any accidental leakage is eliminated.



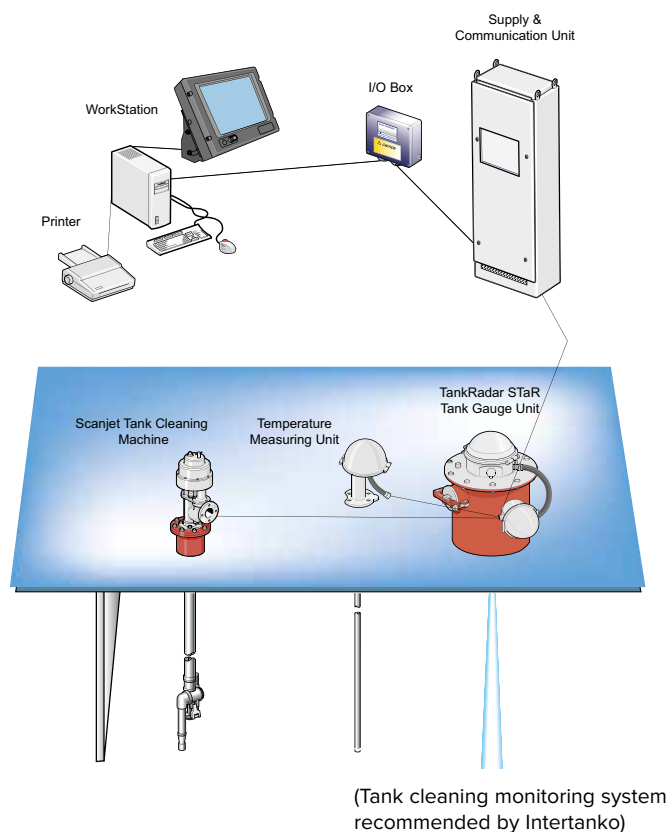
## WashTrac™ Tank Cleaning Monitoring System

The innovative tank cleaning monitoring system is jointly developed by Saab Rosemount Marine and Scanjet Marine. By using already installed hardware, WashTrac™ monitors the tank cleaning operation onboard any tanker.

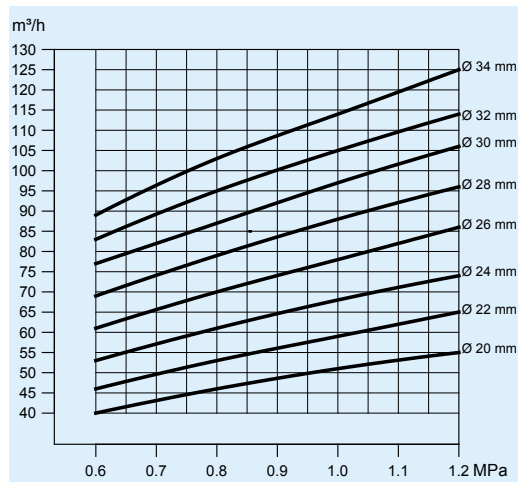
The WashTrac™ systems offers following features and advantages to operators.

- Operating status of tank cleaning machines
- Start/Stop alarm of tank cleaning machines
- Operation and prewash data logging on printer

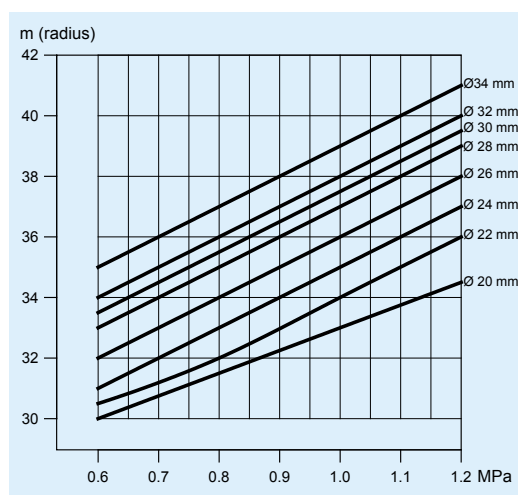
Various options available



## Technical performance

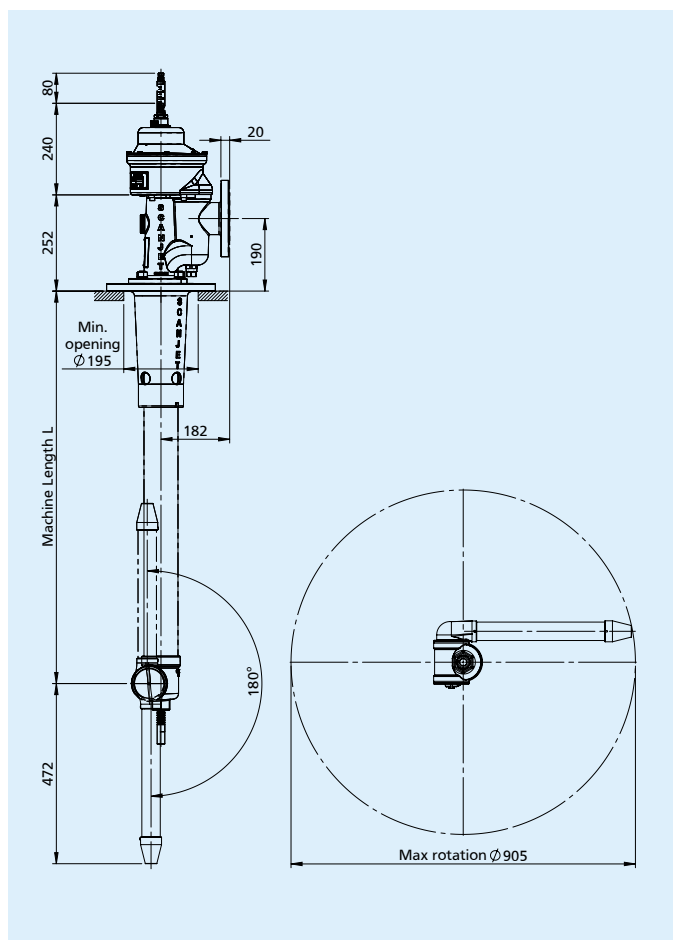


Water flow for selection of different nozzles sizes at specific inlet pressure.



Effective jet length for selection of different nozzles sizes at specific inlet pressure.  
(Performance data according to DNV type approval certificate)

## Dimensions



### Deck flange:

	O.D (A)	P.C.D (B)	Holes (C)	Thickness (G)
JIS5K-200A	Ø320	Ø280	Ø23 (8x)	20
PN16-DN150	Ø285	Ø240	Ø23 (8x)	20

### Inlet flange:

	O.D (D)	P.C.D (E)	Holes (F)	Height (H)
JIS16K-80A	Ø200	Ø160	Ø23 (8x)	190
PN16-DN80	Ø200	Ø160	Ø18 (8x)	190

## Specifications

Flow	40-125 m³/h
Inlet pressure	0,6-1,2 MPa
Recommended pressure	0,8 MPa
Max temperature	95°C
Rotation speed	0,5-1,5 rpm
Approx weight (L=3500mm)	100 kg
Per additional meter of main pipe	15 kg
Material in contact with cargo	as per specification
Lubrication	Grease



Scanjet Marine AB  
P.O. Box 9316  
SE-400 97 Göteborg  
Sweden

Phone: + 46 31 338 7530  
E-mail: office@scanjet.se  
Web: www.scanjet.se



# SC 40RT

Scanjet tank cleaning equipment



## KEY FEATURES

- + Magnetic drive
- + Rugged construction
- + External drive
- + Easy maintenance
- + High jet impact
- + Easy installation
- + Adjustable speed

The SC 40RT is a dual or four nozzle externally driven automated tank cleaning machine constructed of 316 stainless steel and other highly corrosion resistant materials. It employs a patented magnetic drive transmission thus reducing the need for costly seal replacements and potential failures when used in hazardous environments. The drive mechanism and other major components are external to the tank, this results in easy maintenance and a high level of safety when the cleaning of hazardous products are required.

The SC 40RT is a very rugged and durable tank cleaning machine; designed for demanding cleaning applications where reliability and long service intervals are required.

## Quality Standards

The SC 40RT is produced in accordance with ISO 9001 Quality Standards and our certificate of conformity and accreditation is available on request.

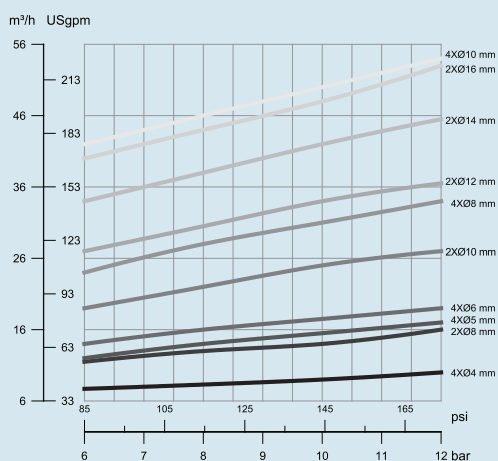
## Typical applications

- + Ethanol fermenters, storage and process tanks
- + Crude oil storage tanks
- + High density stock chest
- + Large silos and dryers
- + Road tankers and railcars
- + Reactors
- + Large Uni-Tanks
- + Pulp storage tanks

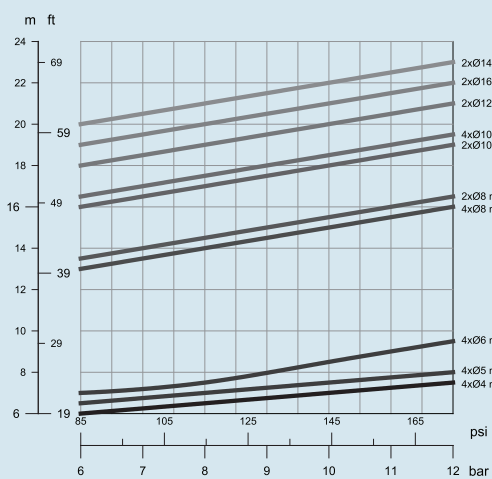




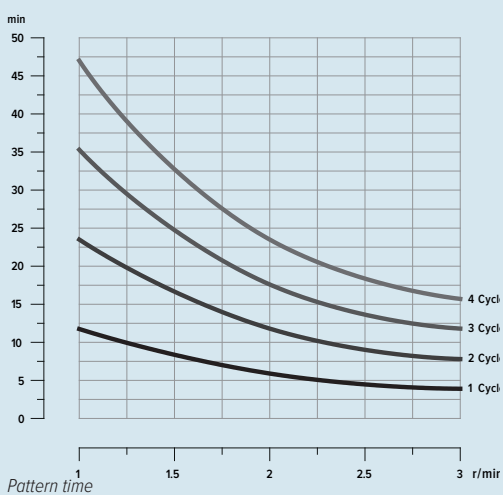
## Technical performance



Pressure/Flow

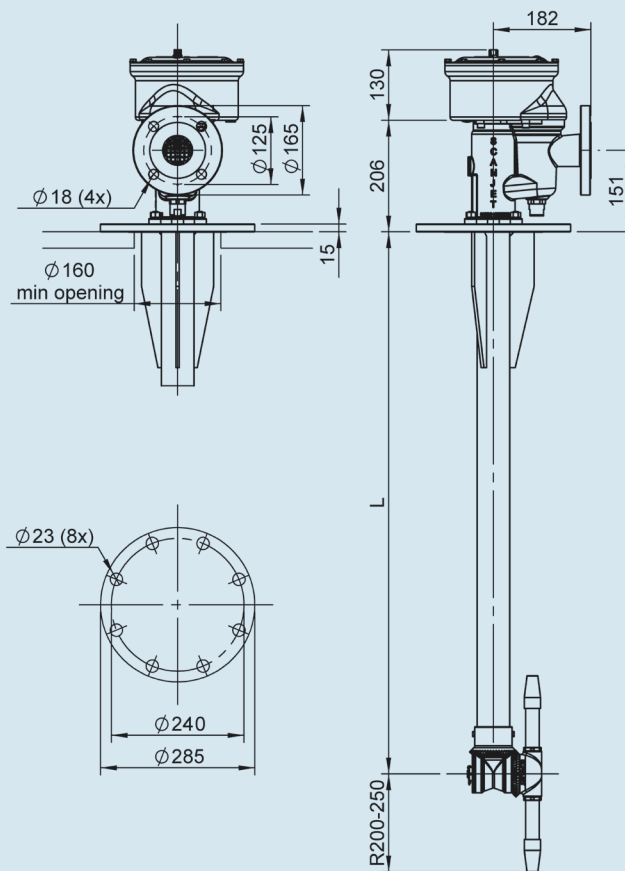


Jet length



Pattern time

## Dimensions



## Specifications

Flow	5-55 m³/h
Inlet pressure	6-12 bar
Max pressure	14 bar
Recommended pressure	8 bar
Max temperature	95°C
Rotation speed	1-2 rpm
Standard length	1500 mm
Weight	43 kg
Per additional meter of main pipe	10 kg
Tank connection	PN16 DN150
Inlet connection	PN16 DN50
Materials	AISI 316, PTFE, Viton
Lubrication	Cleaning media



Scanjet Systems AB  
P.O. Box 9316  
SE-400 97 Göteborg Sweden  
Phone + 46 31 338 75 30  
Fax + 46 31 338 75 40  
E-mail sales@scanjetsystems.com  
Web www.scanjetsystems.com