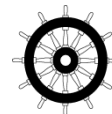


# TEAMTEC INCINERATORS

Market leaders since 1972 - More than 11 000 units sold worldwide



MED APPROVED



OG120C  
Capacity: 220 kW

## TEAMTEC Incinerator model OG120C

The smallest incinerator in our range. The sturdy, compact design and high performance make the **OG120C** an *obvious first choice* for the waste treatment onboard small and medium sized vessels.

### COMPACT DESIGN

The TEAMTEC high capacity incinerator models have one of the world's **smallest footprints and overall size**. The incinerators can easily be installed in a corner.

Our incinerators are made from high quality marine components only.

### AUTOMATIC CONTROL

TEAMTEC incinerators are all controlled by a high technology PLC ensuring a **simple and reliable operation, maximum capacity utilisation and minimum fuel consumption**.

**Minimum attendance** is needed during operation and remote supervision is possible.

### LOW OPERATION COSTS

Our unique high temperature cyclone burning principle ensures that all the incinerators in TEAMTEC product range can incinerate sludge oil (waste oil) with water content up to 50% without using support fuel, leaving our incinerators as one of the most **economical** incinerators on the market.

TEAMTEC incinerators have **no strainers or filters** in the sludge oil system and this in addition to several other advantages keeps the maintenance costs to an absolute minimum.

### MODULAR CONSTRUCTION

All our incinerators are of a **modular construction** and can, if required, be delivered as a flat-packed unit for assembling onboard the vessel/installation – no parts are bigger than a normal ship door. No welding is needed.

This construction also benefits the life-time maintenance works.

## TECHNICAL DATA – OG120C model:

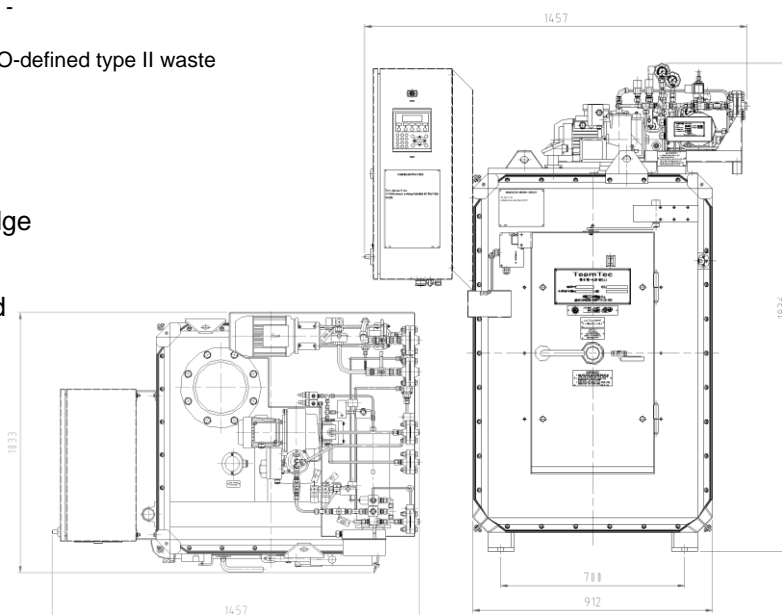
Version:	C	CW
Calorific capacity:	190 000 kcal/h 220 kW	190 000 kcal/h 220 kW
Sludge oil capacity *:	29 l/h	N/A
Bilge water capacity:	N/A	N/A
Solid waste capacity:	200 l/load (26 kg IMO**)	200 l/load (26 kg IMO**)
Feeding sluice:	-	-

\* IMO-defined sludge oil, 20% water content. \*\* IMO-defined type II waste

## ALL VERSIONS:

The C-version burns simultaneously sludge oil and solid waste.

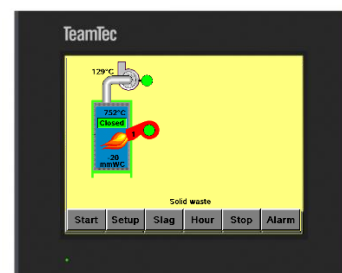
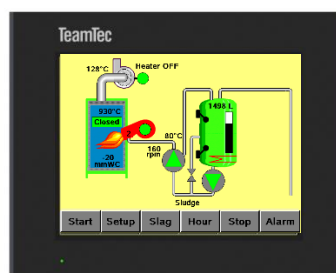
TEAMTEC incinerators are designed and certified in compliance with the IMO resolution MEPC 244 (66) and IMO MARPOL ANNEX VI.



## OPTIONS:

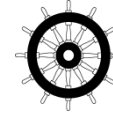
- Skid/base mounted units
- Containerized units
- Remote control panel / slave panel
- Sludge oil and diesel oil tanks
- Diesel oil transfer and booster pumps
- Sludge tank level indicator in operator display
- Heat tracing control for the sludge circulation line
- Frequency controlled flue gas fan
- Flue gas stack components
- Solutions for ambient temp. above 55°C
- Project versions

*PLC colour touch screen panel as standard:*



# TEAMTEC INCINERATORS

Market leaders since 1972 - More than 11 000 units sold worldwide



MED APPROVED



OG200CS with a sluice for continuous feeding of solid waste.  
Capacity: 465 kW

## TEAMTEC Incinerator model OG200C

With its sturdy and compact design and high performance the **OG200C** is one of our most popular models and an *obvious first choice* for solving the waste treatment onboard medium-sized vessels.

### COMPACT DESIGN

The TEAMTEC high capacity incinerator models have one of the world's **smallest footprints and overall size**. The incinerators can easily be installed in a corner. Our incinerators are made from high quality marine components only.

### AUTOMATIC CONTROL

TEAMTEC incinerators are all controlled by a state-of-the-art PLC ensuring a **simple and reliable operation, maximum capacity utilisation and minimum fuel consumption**. **Minimum attendance** is needed during operation and remote supervision is possible.

### LOW OPERATION COSTS

Our unique high temperature cyclone burning principle ensures that all the incinerators in TEAMTEC product range can incinerate sludge oil (waste oil) with water content up to 50% without using support fuel, leaving our incinerators as one of the most **economical** incinerators on the market.

TEAMTEC incinerators have **no strainers or filters** in the sludge oil system and this in addition to several other advantages keeps the maintenance costs to an absolute minimum.

### MODULAR CONSTRUCTION

All our incinerators are of a **modular construction** and can, if required, be delivered as a flat-packed unit for assembling onboard the vessel/installation – no parts are bigger than a normal ship door. No welding is needed. This construction also eases and benefits the life-time maintenance works.

## TECHNICAL DATA – OG200C model:

Version:	C	CS	CW	CSW	CI*	CIS*
Calorific capacity:	400 000 kcal/h 465 kW	400 000 kcal/h 465 kW	400 000 kcal/h 465 kW	400 000 kcal/h 465 kW	541 900 kcal/h 630 kW	541 900 kcal/h 630 kW
Sludge oil capacity **:	53 l/h	53 l/h	N/A	N/A	70 l/h	70 l/h
Bilge water capacity:	N/A	N/A	N/A	N/A	127 l/h	127 l/h
Solid waste capacity:	400 l/load (52 kg IMO***)	20-50 kg/h	400 l/load (52 kg IMO***)	20-50 kg/h	400 l/load (52 kg IMO***)	20-50 kg/h
Feeding sluice:	-	Yes	-	Yes	-	Yes

\* With TEAMTEC water injection system. \*\* IMO-defined sludge oil, 20% water content. \*\*\* IMO-defined type II waste

## ALL VERSIONS:

All versions (except CW and CSW) burn simultaneously sludge oil and solid waste.

TEAMTEC incinerators are designed and certified in compliance with the IMO resolution MEPC 244 (66) and IMO MARPOL ANNEX VI.

PLC colour touch screen panel as standard:



## OPTIONS:

- Skid/base mounted units
- Containerized units
- Remote control panel / slave panel
- Sludge oil and diesel oil tanks
- Diesel oil transfer and booster pumps
- Sludge tank level indicator in operator display
- Heat tracing control for the sludge circulation line
- Frequency controlled flue gas fan
- Flue gas stack components
- Solutions for ambient temp. above 55°C
- Project versions

## BILGE WATER INJECTION:

As an option the incinerator can be equipped with TEAMTEC bilge water injection system to reduce the load on the Oily Water Separator by utilizing the heat from the sludge oil combustion. No additional diesel oil consumption. With PLC controlled injection of the water you achieve:

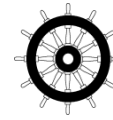
- Safe disposal of contaminated water
- Increased sludge capacity (ref. table)
- Reduced NOx emission - verified by DNV

Bilge Water injection is approved by major classification societies.

Quick and simple upgrading of existing TEAMTEC incinerators is available.

# TEAMTEC INCINERATORS

Market leaders since 1972 - More than 11 000 units sold worldwide



MED APPROVED



OG400CS with a sluice for continuous feeding of solid waste.  
Capacity: 596 kW

## TEAMTEC Incinerator model OG400C

With its sturdy and compact design and high performance the **OG400C** is one of our most popular models and an *obvious first choice* for solving the waste treatment on-board medium-sized vessels.

### COMPACT DESIGN

The TEAMTEC high capacity incinerator models have one of the world's **smallest footprints and overall size**. The incinerators can easily be installed in a corner.

Our incinerators are made from high quality marine components only.

### AUTOMATIC CONTROL

TEAMTEC incinerators are all controlled by a state-of-the-art PLC ensuring a **simple and reliable operation, maximum capacity utilisation and minimum fuel consumption**.

**Minimum attendance** is needed during

### LOW OPERATION COSTS

Our unique high temperature cyclone burning principle ensures that all the incinerators in TEAMTEC product range can incinerate sludge oil (waste oil) with water content up to 50% without using support fuel, leaving our incinerators as one of the most **economical** incinerators on the market.

TEAMTEC incinerators have **no strainers or filters** in the sludge oil system and this in addition to several other advantages keeps the maintenance costs to an absolute minimum.

### MODULAR CONSTRUCTION

All our incinerators are of a **modular construction** and can, if required, be delivered as a flat-packed unit for assembling onboard the vessel/installation – no parts are bigger than a normal ship door. No welding is needed.

This construction also benefits the life-time maintenance works.



operation and remote supervision is possible.

## TECHNICAL DATA – OG400C model:

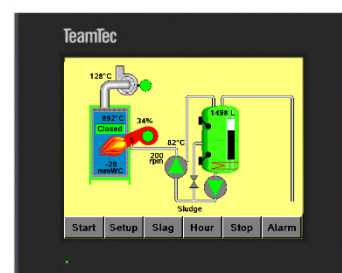
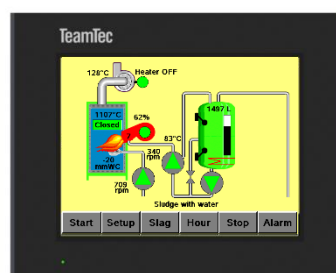
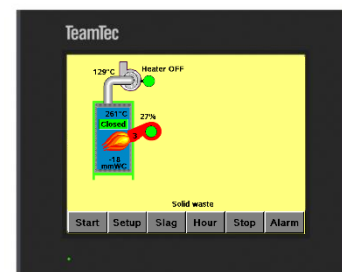
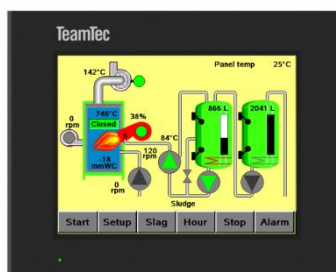
Version:	C	CS	CW	CSW	CI*	CIS*
Calorific capacity:	512 000 kcal/h	512 000 kcal/h	512 000 kcal/h	512 000 kcal/h	625 300 kcal/h	625 300 kcal/h
	596 kW	596 kW	596 kW	596 kW	727 kW	727 kW
Sludge oil capacity **:td>	74 l/h	74 l/h	N/A	N/A	81 l/h	81 l/h
Bilge water capacity:	N/A	N/A	N/A	N/A	140 l/h	140 l/h
Solid waste capacity:	400 l/load (52 kg IMO***)	20-50 kg/h	400 l/load (52 kg IMO***)	20-50 kg/h	400 l/load (52 kg IMO***)	20-50 kg/h
Feeding sluice:	-	Yes	-	Yes	-	Yes

\* With TEAMTEC water injection system. \*\* IMO-defined sludge oil, 20% water content.

All versions (except CW and CSW) burn simultaneously sludge oil and solid waste.

TEAMTEC incinerators are designed and certified in compliance with the IMO resolution MEPC 244 (66) and IMO MARPOL ANNEX VI.

PLC colour touch screen panel as standard:



## OPTIONS:

- Skid/base mounted units
- Containerized units
- Remote control panel / slave panel
- Sludge oil and diesel oil tanks
- Diesel oil transfer and booster pumps
- Sludge tank level indicator in operator display
- Heat tracing control for the sludge circulation line
- Frequency controlled flue gas fan
- Flue gas stack components
- Solutions for ambient temp. above 55°C
- Project versions

## BILGE WATER INJECTION:

As an option the incinerator can be equipped with TEAMTEC bilge water injection system to reduce the load on the Oily Water Separator by utilizing the heat from the sludge oil combustion. No additional diesel oil consumption. With PLC controlled injection of the water while burning sludge oil, you achieve:

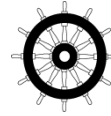
- Safe disposal of contaminated water
- Increased sludge capacity (ref. table)
- Reduced NOx emission - verified by DNV

Bilge water injection is approved by major classification societies.

Quick and simple upgrading of existing TEAMTEC incinerators is available.

# TEAMTEC INCINERATORS

Market leaders since 1972 - More than 11 000 units sold worldwide



MED APPROVED



*GS500CS with a sluice for continuous feeding of solid waste. Capacity: 850 kW*

## TEAMTEC Incinerator model GS500CS

The **GS500CS** is one of the most effective marine incinerators on the market today. The model is available with manual or automatic feeding of solid waste and full automatic sludge burning.

### COMPACT DESIGN

The TEAMTEC high capacity incinerator models have one of the world's **smallest footprints and overall size**. The incinerators can easily be installed in a corner.

Our incinerators are made from high quality marine components only.

### AUTOMATIC CONTROL

TEAMTEC incinerators are all controlled by a state-of-the-art PLC ensuring a **simple and reliable operation, maximum capacity utilisation and minimum fuel consumption**.

### LOW OPERATION COSTS

Our unique high temperature cyclone burning principle ensures that all the incinerators in TEAMTEC product range can incinerate sludge oil (waste oil) with water content up to 50% without using support fuel, leaving our incinerators as one of the most **economical** incinerators on the market.

TEAMTEC incinerators have **no strainers or filters** in the sludge oil system and this in addition to several other advantages keeps the maintenance costs to an absolute minimum.

### MODULAR CONSTRUCTION

All our incinerators are of a **modular construction** and can, if required, be delivered as a flat-packed unit for assembling onboard the vessel/installation – no parts are bigger than a normal ship door. No welding is needed.

This construction also benefits the life-time maintenance works.

**Minimum attendance** is needed during operation and remote supervision is possible.

## TECHNICAL DATA – GS500C model:

Version:	CS	CSW	CGSW <sup>(1)</sup>	CIS*	CIC <sup>(2)</sup>
Calorific capacity:	731 000 kcal/h 850 kW	731 000 kcal/h 850 kW	731 000 kcal/h 791 kW	775 000 kcal/h 850 kW	800 000 kcal/h 930 kW
Sludge oil capacity **:	100 l/h	N/A	N/A	120 l/h	105 l/h
Bilge water capacity:	N/A	N/A	N/A	153 l/h	N/A
Solid waste capacity:	50-135 kg/h	50-135 kg/h	60-150 kg/h	50-135 kg/h	50-135 kg/h
Feeding sluice:	Yes	Yes	Yes	Yes	Yes

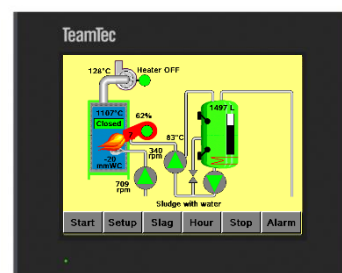
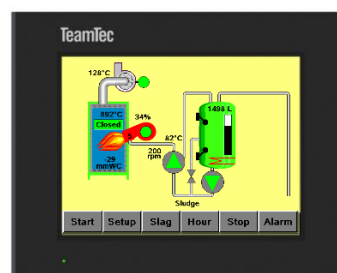
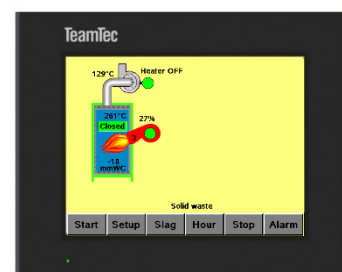
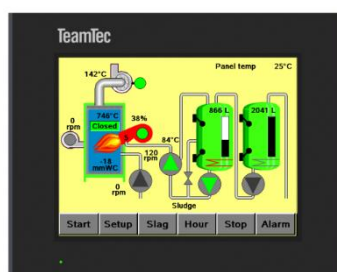
\* With TEAMTEC water injection system. \*\* IMO-defined sludge oil, 20% water content. (1) With stirrer. (2) CIC is our high capacity version.

## ALL VERSIONS:

All versions (except CSW) burn simultaneously sludge oil and solid waste.

TEAMTEC incinerators are designed and certified in compliance with the IMO resolution MEPC 244 (66) and IMO MARPOL ANNEX VI.

PLC colour touch screen panel as standard:



## OPTIONS:

- Auto **waste feeding system** (CFGSW) with a hopper, a shredder and a feeding screw, see separate brochure.
- Skid/base mounted units
- Containerized units
- Remote control panel / slave panel
- Sludge oil and diesel oil tanks
- Diesel oil transfer and booster pumps
- Sludge tank level indicator in operator display
- Heat tracing control for the sludge circulation line
- Frequency controlled flue gas fan
- Flue gas stack components
- Solutions for ambient temp. above 55°C
- Project versions

## BILGE WATER INJECTION:

As an option the incinerator can be equipped with TEAMTEC bilge water injection system to reduce the load on the Oily Water Separator by utilizing the heat from the sludge oil combustion. No additional diesel oil consumption. With PLC controlled injection of the water you achieve:

- Safe disposal of contaminated water
- Increased sludge capacity (ref. table)
- Reduced NO<sub>x</sub> emission - \*\*\* verified by DNV

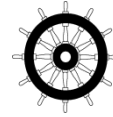
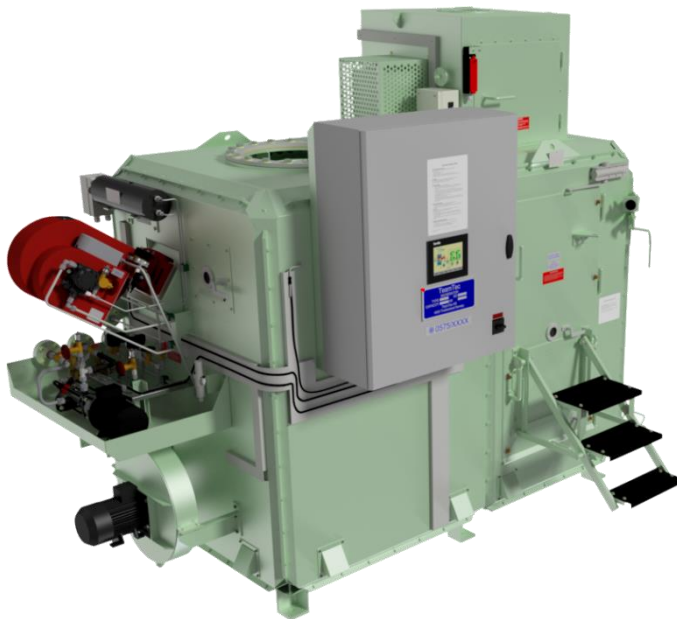
Bilge Water Injection is approved by major classification societies.

Quick and simple upgrading of existing TEAMTEC incinerators available.



# TEAMTEC INCINERATORS

Market leaders since 1972 - More than 11 000 units sold worldwide



MED APPROVED



*GS900CRSX with a sluice for continuous feeding of solid waste.  
Capacity: 1369 kW*

## TEAMTEC Incinerator model GS900CX

The **GS900CX** is one of the most effective, compact and environmentally friendly marine incinerators on the market today. The model is available with manual or automatic feeding of solid waste and full automatic sludge burning.

### COMPACT DESIGN

The TEAMTEC high capacity incinerator models have one of the world's **smallest footprints and overall size**. The incinerators can easily be installed in a corner.

Our incinerators are made from high quality marine components only.

### AUTOMATIC CONTROL

TEAMTEC incinerators are all controlled by a high technology PLC ensuring a **simple and reliable operation, maximum capacity utilisation and minimum fuel consumption**.

**Minimum attendance** is needed during operation and remote supervision is possible.

### LOW OPERATION COSTS

Our unique high temperature cyclone burning principle ensures that all the incinerators in TEAMTEC product range can incinerate sludge oil (waste oil) with water content up to 50% without using support fuel, leaving our incinerators as one of the most **economical** incinerators on the market.

TEAMTEC incinerators have **no strainers or filters** in the sludge oil system and this in addition to several other advantages keeps the maintenance costs to an absolute minimum.

### MODULAR CONSTRUCTION

All our incinerators are of a **modular construction** and can, if required, be delivered as a flat-packed unit for assembling onboard the vessel/installation – no parts are bigger than a normal ship door. No welding is needed.

This construction also benefits the life-time maintenance works.

## TECHNICAL DATA – GS900CX model:

Version:	CX	CRSX
Calorific capacity:	1 177 300 kcal/h 1 369 kW	1 177 300 kcal/h 1 369 kW
Sludge oil capacity *:	162 l/h	162 l/h
Bilge water capacity:	-	-
Solid waste capacity:	600 l/load (78 kg IMO**)	50-135 kg/h
Feeding sluice:	-	125 liter

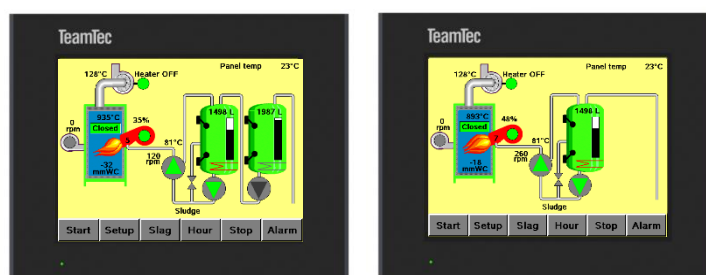
\* IMO-defined sludge oil, 20% water content. \*\* IMO defined type II waste

## ALL VERSIONS:

All versions burn simultaneously sludge oil and solid waste.

TEAMTEC incinerators are designed and certified in compliance with the IMO resolution MEPC 76 (40) and IMO MARPOL ANNEX VI \*\*\*.

PLC colour touch screen panel as standard:



## OPTIONS:

- Skid/base mounted units
- Containerized units
- Remote control panel / slave panel
- Sludge oil and diesel oil tanks
- Diesel oil transfer and booster pumps
- Sludge tank level indicator in operator display
- Heat tracing control for the sludge circulation line
- Frequency controlled flue gas fan
- Flue gas stack components
- Solutions for ambient temp. above 55°C
- Project versions

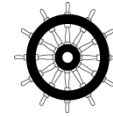
## BILGE WATER INJECTION:

TEAMTEC bilge water injection system to reduce the load on the Oily Water Separator by utilizing the heat from the sludge oil combustion is available for the TEAMTEC Incinerator model GS1000CX (same footprint).

\*\*\* verified by DNV

# TEAMTEC INCINERATORS

Market leaders since 1972 - More than 11 000 units sold worldwide



MED APPROVED



GS1000CRSX with a sluice for continuous feeding of solid waste.  
Capacity: 1500 kW

## TEAMTEC Incinerator model GS1000CX

The **GS1000CX** is the most compact marine incinerator, relative to capacity, on the market today, 1500 kW. The model has NOx reducing *bilge water injection* as standard.

### COMPACT DESIGN

The TEAMTEC high capacity incinerator models have one of the world's **smallest footprints and overall size**. The incinerators can easily be installed in a corner. Our incinerators are made from high quality marine components only.

### AUTOMATIC CONTROL

TEAMTEC incinerators are all controlled by a high technology PLC ensuring a **simple and reliable operation, maximum capacity utilisation and minimum fuel consumption**.

**Minimum attendance** is needed during

### LOW OPERATION COSTS

Our unique high temperature cyclone burning principle ensures that all the incinerators in TEAMTEC product range can incinerate sludge oil (waste oil) with water content up to 50% without using support fuel, leaving our incinerators as one of the most **economical** incinerators on the market.

TEAMTEC incinerators have **no strainers or filters** in the sludge oil system and this in addition to several other advantages keeps the maintenance costs to an absolute minimum.

### MODULAR CONSTRUCTION

All our incinerators are of a **modular construction** and can, if required, be delivered as a flat-packed unit for assembling onboard the vessel/installation – no parts are bigger than a normal ship door. No welding is needed.

This construction also benefits the life-time maintenance works.

operation and remote supervision is possible.

## TECHNICAL DATA – GS1000CX model:

Version:	CX	CRSX
Calorific capacity:	1 290 000 kcal/h <b>1 500 kW</b>	1 290 000 kcal/h <b>1 500 kW</b>
Sludge oil capacity *:	171 l/h	171 l/h
Bilge water capacity:	237 l/h	237 l/h
Solid waste capacity:	600 l/load (78 kg IMO**)	50-135 kg/h
Feeding sluice:	-	125 liter

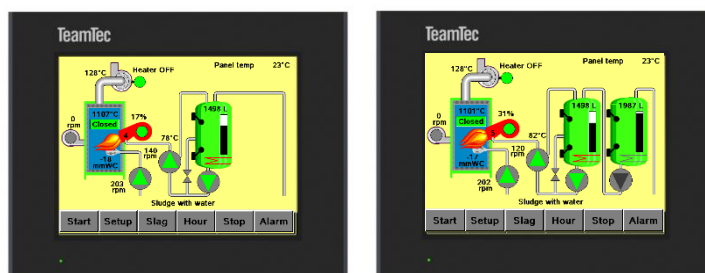
\* IMO-defined sludge oil, 20% water content. \*\* IMO defined type II waste

## ALL VERSIONS

All versions burn simultaneously sludge oil and solid waste.

TEAMTEC incinerators are designed and certified in compliance with the IMO resolution MEPC 244(66) and IMO MARPOL ANNEX VI.

PLC colour touch screen panel as standard:



## OPTIONS:

- Skid/base mounted units
- Containerized units
- Remote control panel / slave panel
- Sludge oil and diesel oil tanks
- Diesel oil transfer and booster pumps
- Sludge tank level indicator in operator display
- Heat tracing control for the sludge circulation line
- Frequency controlled flue gas fan
- Flue gas stack components
- Solutions for ambient temp. above 55°C
- Project versions

## BILGE WATER INJECTION:

This model is equipped with TEAMTEC bilge water injection system as standard to reduce the load on the Oily Water Separator by utilizing the heat from the sludge oil combustion. No additional diesel oil consumption.

By a PLC controlled injection of the water you achieve:

- Safe disposal of contaminated water
- Increased sludge capacity (ref. table)
- Reduced NOx emission - verified by DNV

Bilge Water Injection is approved by major classification societies.

Quick and simple upgrading of existing TEAMTEC incinerators available.